



# Synapse

ALABAMA HEALTH LIBRARIES ASSOCIATION

VOLUME III, NO. 4

DECEMBER 1983

## The Presidents' ... Last Word !

by Mary Ann Donnell

If you do your job well, there's evidence that you too may become a manager, a supervisor, or even a member of junior Administration.

Recently our Hospital Education Department was asked by Administration and Personnel to formulate inservice programs and self-studies for the middle managers. These would be of varying credit and topics. Managers and department heads would be encouraged to up-grade their skills by a set number of credit hours put together as they wished or needed.

Hospital Education assembled an array of classes taught mostly by in-house personnel--the topics ranging from "Effective Presentations" to "Development of Employee Appraisal."

Those of us who taught classes were given credit for teaching times the length and number of presentations. In addition, packets with articles and short quizzes or essays provided take-home modules which were checked out through the library. Video-cassettes with similar evaluations were either used in the library or taken to departments for low-census times.

Among the books and materials developed in the library were articles from the Harvard Business Review reprint file. (The one on "The Abrasive Personality" was especially popular.) Good reading included Naisbitt: Megatrends; Douglas: Successful Time Management for Hospital Administrators (AMACOM, 1980); Blanchard: The One Minute Manager (Morrow, 1982); Carner, Don C.: Carner's Codes for Executive Survival (Association of Western Hospitals). I highly recommend Hospital Forum (\$20 yr.), a journal also published by the Association of Western Hospitals.

Have you considered management material in your library? We may be experts in our specialities, but the direction of health care management in general for us and our peers is a rapidly changing picture today. Anything we can market in health care administration generally or specifically will help us as much as our co-workers.

---

SYNAPSE is the official publication of the Alabama Health Libraries Association (AHeLA). Edited by Patricia M. Rodgers, Mobile, Alabama.

# ... First Word !

by Nancy Clemmons

It was wonderful to see so many of you at the Southern Chapter/AIHeLA meeting in Birmingham. We should all be extremely proud of our members and their significant contributions to the program.

Now it is already time to think about next year's program and plans. Please help us plan another meeting that will be worth your time and money! Take a few minutes this week to complete the evaluation/suggestion form that I have included in this SYNAPSE.

On November 14th the Executive Committee had a profitable transitional meeting with the old and the new officers. This should help the new committee get off to a smooth start. At the first meeting on January 27th, the Executive Committee will meet to discuss future plans and the appointment of committee chairman and members. Let us know which committee would fit your talents and interests.

Our first Alabama Union List of Health Science Serials will be our main goal this year. Since we have many options open to us, we will circulate a questionnaire to help determine members' needs and preferences. Don't miss your opportunity to help develop the kind of union list that will be most useful for your library.

Other plans we have discussed include:

- New member's packet
- More cooperation with the Health Sciences Round Table of the Alabama Library Association and the Alabama Society of Library Managers
- Update the Directory of Alabama Health Sciences Libraries (Perhaps we will want to expand the information on interlibrary loan policies to tie in with the use of the union list.)

What else can we accomplish by working together this year?

## New Friends and Old Friends

by Atha Louise Henley

Have you met any new friends lately? There is always that opportunity for librarians especially at professional meetings. If you're interested in meeting new friends you have to excuse yourself from friends with whom you may have travelled or already know. Move out and forward; seize the opportunity and introduce yourself to a person you do not know.

Of course you feel comfortable with old friends but meeting new ones can be a marvelous happening. Only God knows what new opportunities may later come your way--through a new friend. Try it!! Most of all, you may surprise yourself.

# CALENDAR OF EVENTS

February 15, 1984

Deadline for March issue of SYNAPSE.

April 11-13, 1984

Alabama Library Association - Birmingham, Alabama  
Health Sciences Roundtable

May 7-11, 1984

Initial Online Training - MEDLARS - Lister Hill Library of the Health Sciences - Birmingham, Alabama. See "News From Lister Hill" in this issue.

May 25-31, 1984

Medical Library Association - 84th Annual Meeting - Denver, Colorado

July 9 - August 10, 1984

LS 535 - Medical Librarianship (time to be arranged). Contact: Ruth Fenske, Graduate School of Library Service, University of Alabama, Tuscaloosa, Alabama.

October 10-14, 1984

Southern Chapter - Medical Library Association - Key Biscayne, Florida

April 10-12, 1985

Alabama Library Association - Mobile, Alabama - Riverview Plaza Hotel

May 24-30, 1985

Medical Library Association - 85th Annual Meeting - New York, N.Y.

## erratum

The September 1983 issue of the SYNAPSE was incorrectly numbered volume III, no. 2. It should be volume III, no. 3. Believe it or not, a reference librarian, not a serials librarian pointed out the mistake to me! I guess you serials librarians know publishers don't know what they are doing!!



# Editor's Corner

I have almost finished editing the copy for this issue and arranging it for the layout and now it is time for me to write in my corner. As my first year of editorship draws to a close, I reflect back over the past three issues.

I was "scared stiff" with the first one--having a tough act to follow--Kathy Dexter. The second one caused me some anguish, fearing I could not recruit enough "words of wisdom" from the membership. However, by the third issue, I felt more comfortable with the job, I had decided on some regular features (with your feedback), and contributions were rolling in. This issue has been "a breeze"--I have more copy than we can afford to print (will roll it over to the March issue).

I have also been reflecting on the quality of the newsletter. You, the membership, have made the newsletter and I am very proud of it! I think we get better and better with each issue. I am going to try to exchange our newsletter with other such organizations, not only to see what those organizations are doing, but to project ALHeLA's image!

Have a wonderful holiday season, and I look forward to another year working with each and every one of you!

## News from RML

**NEW REPORT.** If you would like some information for your administration outlining the costs and benefits of becoming an Online Center, a new report describing potential costs of establishing library online search services is available from the Region 2 RML Office. Entitled Start-Up Costs for an Online Search Service, the report was prepared by the Online Services Committee of former Region IV. Estimates are included for terminals, connect time, paper, offline prints, training, searching tools, labor, and other costs necessary for the provision of online search services. To obtain a copy of this guide, write or call the address below.

**SEA CURRENTS.** If you are not already receiving the RML 2 publication, Sea Currents, contact the address or phone number below. This is a very informative newsletter, designed to help keep us all up to date on changing policies, procedures, prices, etc. of the RML and participating resource libraries such as Lister Hill Library at UAB and the Biomedical Library at USA.

Southeastern/Atlantic Regional Medical Library Services  
University of Maryland Health Sciences Library  
111 South Green Street  
Baltimore, Maryland 21201-1583  
800-638-6093

# RML Satellite Librarian

The following describes a new program which the Lister Hill Library will be offering to Alabama and adjacent states as the result of a sub-contract with the regional medical library at the Health Sciences Library of the University of Maryland at Baltimore. The position that will be providing these services appears elsewhere in this issue. If any reader has any ideas on how this program can best serve health information needs in the state, I would be interested in hearing from you. In order to assist in the planning effort, an appointment of an advisory committee consisting of individuals from Alabama and other states served by the program is also under consideration.

**PURPOSE:** Through a program headquartered at UAB, provide Satellite Regional Medical Library Services designed to improve access to health information in specific areas of the Southeastern U. S. where health professionals lack timely, convenient access to such information.

As a Satellite RMLS, UAB will serve the states of Alabama, Mississippi, Tennessee and Florida.

**GOAL:** To support national and regional network goals by providing the following programs:

## (1) Consultation and Development Program

The purpose of the consultation and development program will be to encourage the development and/or improvement of health sciences libraries in hospitals and other institutions in the designated areas of the Southeast through which health professionals can gain primary access to health information. UAB will assist UMAB to identify and target RML services to underserved areas by:

- (a) providing on-site consultations to health care institutions with new or developing libraries, to consortia, and to state health sciences libraries associations interested in supporting a statewide network;
- (b) assisting with the preparation of grant proposals for library development;
- (c) speaking at local and state meetings of health professional to promote RML programs and library services;
- (d) identifying other health sciences librarians in the designated areas who are eligible to provide consultation services to developing health sciences libraries; and
- (e) advising and encouraging potential online search centers and providing MEDLARS online searching demonstrations.

## (2) Training Program

The purpose of the training program will be to instruct inexperienced hospital library personnel in the Southeast in the basic skills required to manage a hospital library and to provide basic library services; and to train health professionals directly to gain access to computerized bibliographic and knowledge databases. UAB will:

- (a) identify which courses are needed in the designated areas of the Southeast and by whom they are needed;
- (b) assist in scheduling and teaching courses where appropriate, with particular emphasis on interlibrary loan and union list development workshops, and online database searching for library managers and health professionals;
- (c) identify other qualified course instructors and NLM online database demonstrators in the area.

(3) Resource Sharing Program

The purpose of the resource sharing program will be to encourage sharing of collection, services, and other resources among network libraries both in the Southeast and at the regional level; to make the availability of such resources known to network members; and to enforce regional policies and procedures which facilitate access to resources. UAB will:

- (a) share its collection resources among network libraries in Region 2, between Region 2 and other RML Network Regions, and where appropriate, between Region 2 and other library/information networks, and in so doing will conform to the principles of the Region 2 Document Delivery Policy.
- (b) make a progressive effort to achieve or improve RML Network performance standards for document delivery services;
  1. Fulfillment Standard: An acceptable level of performance for UAB shall be a 75% fill rate.
  2. Throughput Standard: UAB shall participate in a random sampling of requests during seven work days out of every report quarter (days to be assigned by UMAB) to determine the number of calendar days it takes to complete processing of filled and unfilled requests. Network standards shall require that processing of 85% of filled loans be completed within four (4) calendar days and that 85% of unfilled requests be processed within seven (7) calendar days. Reasons for not filling requests will also be determined from the same sample of requests.
- (c) interpret and promote adherence to Region 2 interlibrary loan protocols;
- (d) encourage state and local network arrangements for cooperative reference and online search services, collection development and interlibrary lending;
- (e) promote participation in the Region 2 Union List of Serials by all health sciences libraries in the designated areas, and coordinate serials data collection from participating libraries upon request by UMAB;
- (f) provide at least annual serials holdings updates to UMAB, or its designee, in a format compatible with that of the NLM SERHOLD database, and for inclusion in regular editions of the Region 2 Union List of Serials.

(4) Public Relations Program

The purpose of the public relations program is to inform health professionals in the Southeast, including health sciences librarians, about services available from the RML, and specifically, its SRMLS at UAB. UAB will assist UMAB in identifying and targeting services to underserved areas by:

- (a) speaking and providing demonstrations at state and local meetings of health professionals, including those of health sciences librarians in the Southeast; and
- (b) contributing to the Region 2 newsletter SEA CURRENTS and other appropriate publications.



(5) Information Services Program

The purpose of the information services program is to provide health professionals with needed health care information when it is not available from a local health sciences library. UAB will:

- (a) provide mail and telephone reference services and back-up online search services on NLM online databases. These services will be provided on a not-for-profit basis and fees for online searches will be in accordance with guidelines established by NLM.
- (b) provide quarterly statistical reports documenting the number and nature of SRMLS information services through a method to be developed by UMAB.

For more information about the Satellite RMLS at the University of Alabama, contact:

Richard Fredericksen  
Director, Lister Hill Library of the Health Sciences  
University of Alabama in Birmingham  
University Station  
Birmingham, Alabama 36294  
(205) 934-5460

## News from Lister Hill

Lynn M. Fortney  
Associate Director for Public Services

**H O T F L A S H** for all of you who have been putting off becoming an Online Center for MEDLARS because your administration couldn't afford the expense of sending you far, far away for training. Lister Hill Library will be sponsoring INITIAL ONLINE TRAINING, taught by NLM Staff, May 7-11, 1984, at the Birmingham Medical Center Holiday Inn. See NLM Technical Bulletin, no. 173, September, 1983, pp. 9-14, for more information and a copy of the NLM Online Training Application, or call MEDLARS Management Section of NLM at (800) 638-8480. Word has it that training sessions are already booked into early 1984. Since the Birmingham session is the only one to be offered in the Southeast this year, interested searchers-to-be should apply IMMEDIATELY.

**R E F E R R A L F E E.** As recommended by the RML (and already the practice of many other RML 2 Resource Libraries), Lister Hill Library will begin (1/1/84) charging a \$5.00 referral fee for interlibrary loan requests for journals Lister Hill does not own. Last year, LHL referred 2,238 ILL requests to other libraries because it did not own the journal requested. Now that the RML 2 Union List is available (see below), you can save time and money by sending your ILL requests to the closest holding library. In the cases in which you have checked the RML 2 Union List and found that Lister Hill does own the journal, but Lister Hill is unable to fill the request because the copy was at the bindery or missing (rip-offs/outs are a common problem), your request will be referred at no charge. Be sure to write "Holdings verified on RML 2 Union List" at the top of each ALA approved ILL form.

# MINET Packets Arrive

Recently the Medical Director at Providence started talking about the Alabama Medical Association's new program called MINET. Since that was news to me, I asked for a duplicate of the packet which he had received from Montgomery.

After I saw it, I felt each of you in AlHeLA needed to become acquainted with the information which your physicians and/or administration might be talking about. Therefore, I made our membership list available and you should have received your own copy by now.

Read the parts carefully. A year ago the AMA put on-line the information on Diseases, Drugs, Coding and Nomenclature and Socio/Economic Information and offered it to the medical community. Now the Medical Association of the State of Alabama is acting as a broker for these data bases. The EMPIRES clinical literature information is from Excerpta Medica, but only goes back to 1981.

Read the brochures, compare the costs and be prepared to compare with your present system for accessing outside informational data bases when the subject comes up.

Mary Ann Donnell  
Providence Hospital, Mobile

## Position Open

Lister Hill Library of the Health Sciences, the University of Alabama in Birmingham. Reports to the Associate Director for Public Services. As part of the services of the RML 2, provide program support to the southernmost states in the region. Work will consist of workshop coordination and instruction, consulting services, liaison with outside health organizations, assistance in consortium development, MEDLINE instruction and updates, monitoring document delivery services and related outreach programs. Some participation in Lister Hill Library activities related to these services. Requirements: MLS degree from an ALA-accredited library school, MLA certification highly desirable, 3-5 years experience in a hospital library or in a similar program, online search ability, experience in consulting, willingness to travel, excellent public relations skills required, ability to innovate new services and programs. This appointment will carry faculty status in a non-tenure earning status. Rank and salary commensurate with training and experience. Excellent fringe benefits including TIAA/CREF. Federal funding under a 2-year subcontract. The University of Alabama in Birmingham is an Equal Opportunity/Affirmative Action Employer. Write, listing at least 3 references to: Richard B. Fredericksen, Director, Lister Hill Library of the Health Sciences, University of Alabama in Birmingham, University Station, Birmingham, AL 35294. POSITION OPEN IMMEDIATELY.



# Reflecting Back

"SELF-REFLECTIONS '83"

Southern Chapter - Medical Library Association  
Birmingham, Alabama

Ruth E. Fenske... Attending the Southern Chapter of MLA meeting was definitely the highlight of the Fall convention season for me. The program was a welcome blend of the usual and the unusual, and it was certainly carefully planned and well-executed.

The aspect of the meeting which meant the most to me was what I have long called "the spirit of medical librarianship". This was exemplified by my own personal feeling of camaraderie when I saw librarians I have known for many years as well as my current Alabama colleagues who provide extensive support for my teaching program and students I have had in my classes. Collectively, there was a real sense of community as we listened intently to Carol Burns' report of Miriam Libbey's progress and as we remembered Ann Smallwood and Hilda Harris.

In an age when it seems there are no more heroes, medical librarians do have heroes. Better yet, we have heroines. Mark Hodges provided a nice list of these men and women who have shaped our history and our spirit.

The low point of the conference was the lack of enthusiastic response to Nancy Lorenzi's call for discussion of broadening our perspective of who we are. The audience seemed to be more stunned than energized by the idea of our assuming a broader role in the information world. As one who strives every day to prepare students for practice in the information world of the future, I am worried that the students may be totally disillusioned as they enter the world of practice in our region. Medical librarians are traditionally a forward looking group, and I would hope we continue to be.

Kathy Dexter... Communing with colleagues at professional meetings always seems to "re-charge my batteries," and the SC/MLA/AIHeLA meeting was no exception. As an unemployed librarian, I sometimes feel out of touch with current events in the library field, so I was grateful for the opportunity to catch up on things.

It is essential that medical librarians keep up with trends in the health care field that will affect them either directly or indirectly, and this meeting helped tremendously ("So that's what a 'DRG' is!" I exclaimed at one point.) The restructuring of the RMLs was essential information, too. These bits of information were incidental to the actual theme of the conference, "Self-Reflections '83".

I enjoyed Mary Clay Reinhardt's wardrobe presentation. We do need to be acutely aware of the impression we make on others. Let's bury "Marian Librarian" forever!

By the type of self-examination that took place during this meeting, we can become more aware of ourselves both as individuals and as a profession, with the result that we can have a greater impact on the health care field.

The best part of the conference was getting a shrot break from "mommyhood", a "profession" which I love, but from which a brief respite is occasionally needed in order to get better at it!

# SDI Update

By Mary Ann Donnell, Providence Hospital, Mobile

DRGs ... Implementation, Implication, and Impact

Almost a year ago SYNAPSE printed a bibliography on DRGs compiled by Joyce Sims at St. Vincent's. It was an instant success.

Time has shown that there are ramifications throughout the health care institution and community with the new regulations. This bibliography speaks to some of those: 1) severity of illness, 2) departmental implications, and 3) impact on physicians.

If you know of especially good sources or additional citations please forward them to SYNAPSE editor, Pat Rodgers, for later updates.

Grimaldi, P.L. New Medicare DRG payment calculations issued. NURSING MANAGEMENT 1983 Nov;14(11):19-23.

Piper, L.R. Accounting for nursing functions in DRGs. NURSING MANAGEMENT 1983 Nov;14(11):46-48.

The world according to DRGs. NLN PUBLIC POLICY BULLETIN 1983 Apr;11(2):1-4.

Diagnosis-related payment: new system demands greater cost awareness by pharmacists. HOSPITAL PHARMACY NEWS 1983 Aug;1(4):1,6.

Plomann, M.P. DRGs as one of nine approaches to case mix in transition. NURSING & HEALTH CARE 1983 Oct;4(8):438-443.

Horn, S.D. et al. Measuring severity of illness: homogeneous case mix groups. MEDICAL CARE 1983 Jan;21(1):14-30.

Kreitzer, S.L. Severity of illness: The DRGs' missing link? QUALITY REVIEW BULLETIN 1982 May;8(5):21-34.

Davis, C.K. The federal role in changing health care financing. Part II: Prospective payment and its impact on nursing. NURSING ECONOMICS 1983 Sept-Oct;1(2):98-146.

Salmon, J.W. Who benefits from competition in health care? NURSING ECONOMICS 1983 Sept-Oct;1(2):129-134.

Horn, S.D. Measuring severity of illness: comparisons across institutions. AMERICAN JOURNAL OF PUBLIC HEALTH 1983 Jan;73(1):25-31.

Rules & regulations on DRGs. FEDERAL REGISTER 1983 Sept 1;48(171)

Kappel, D.F. et al. Projected impact of prospective reimbursement system on Missouri ESRD providers. DIALYSIS & TRANSPLANTATION 1983 July;12(7):518-9,22.

Parrish, W.M.Jr. et al. Keys to financial survival under prospective payment. TEXAS HOSPITALS 1983 June;39(1):18-22.

Sabolik, R.J. Extensive changes in reimbursement of provider-based physicians. DIMENSIONS IN HEALTH CARE (Peat Marwick) 1983 April;83(2):1-8.

- A look at Medicare's DRGs. ACOG NEWSLETTER 1983 Sept;27(9):1,5.
- Kuzela, L. Taking a scalpel to health-care costs. INDUSTRY WEEK 1983 August 22:44-46,50-51.
- DRG diagnosis related groups UAB SYNOPSIS 1983 August 10;2(16).
- DRG seminars from participant's perspective. QUALITY REVIEW BULLETIN 1983 Oct;9(10):286-288.
- Bird, S. DRGs: A new way to reimburse hospital costs. AORN JOURNAL 1983 Nov;38(5):773-777.
- Bird, S. The impact of DRGs on OR nursing. AORN JOURNAL 1983 Nov;38(5):778-782.
- Playing the numbers game. MEDICAL WORLD NEWS 1983 October 24:38-40,45-46,51-55.
- Case studies: the doctor, the patient, & the DRG. THE HASTINGS CENTER REPORT 1983 Oct;13(5):23-25.
- Grimaldi, P.L. Calculating DRG-based MEDICARE payment costs. HOSPITAL PROGRESS 1983 Oct;64(10):72-75.
- DRGs: the new pulse of health policy. NURSING & HEALTH CARE 1983 Apr;4(4):208-9.
- DRGs: history and overview. NURSING & HEALTH CARE 1983 Sept;4(7):388-396.
- Acquiring technologies under prospective payment: are MEDICARE DRGs hazardous to your hospital's health? ISSUES IN HEALTH CARE TECHNOLOGY (ECRI) May 1983:1-7.
- Bauknech, V.L. ANA voices concern for quality of care under DRG system. THE AMERICAN NURSE 1983 Nov/Dec:3.
- Grimaldi, P.L. DRG upadte: Medicare's prospective payment plan. Chicago: Pluribus, 1983.
- Grimaldi, P.L. Diagnosis related groups: a practitioner's guide. Chicago: Pluribus, 1983, c1982.

## Directories Available

If you were a paid member for 1983 and did not attend the Birmingham meeting in October or did not receive your directory at the meeting, let B. J. Gramka know and she will send your copy to you.

B. J. Gramka, Secretary/Treasurer  
Alabama Health Libraries Association  
Lister Hill Library of the Health Sciences  
University of Alabama in Birmingham  
Birmingham, Alabama 35296



# Subscription Study

The following study is provided by Joe K. Weed, Vice-President, Director of Marketing at EBSCO Subscription Services.

## SELECTED STATISTICS USING TITLES COVERED BY THE ABRIDGED INDEX MEDICUS

This study was based on prices of 113 journals covered by the ABRIDGED INDEX MEDICUS during the period from 1979-1983. (Two titles were excluded because they are generally offered at no charge to individuals and institutions in the medical field.)

The prices used were the least expensive, annual retail subscription rates available to non-membership institutions in the U.S. Rates were those current in February of each year to insure accurate, current-year data.

The title breakdown, geographically, is as follows:

TOTAL SAMPLE-----113 TITLES (100%)  
 U. S. PUBLISHED-----100 TITLES (88.5%)  
 NON-U. S. PUBLISHED-(12 BRITISH, 1 CANADIAN)----- 13 TITLES (11.5%)

### PRICE COMPARISON OF THE TOTAL SAMPLE (113 TITLES), BY YEAR

	1979	1980	1981	1982	1983
Total Subscription Price (all 113 titles)	\$4,434.42	\$4,966.65	\$5,862.84	\$6,436.50	\$7,015.09
Average Price Per Title	39.24	43.95	51.88	56.96	62.08
Average Annual Percentage Increase	----	12.0%	18.0%	9.8%	9.0%

During the period 1979-1983 the total price increase for all titles was \$2,580.67, or 58.2%. The average annual percentage increase was 14.6%.

### PRICE COMPARISON OF ALL U. S. PUBLISHED TITLES (100), BY YEAR

	1979	1980	1981	1982	1983
Total Subscription Price (all 100 U. S. titles)	\$3,572.05	\$3,991.88	\$4,597.45	\$5,152.95	\$5,571.95
Average Price Per Title	35.72	39.92	45.97	51.53	55.72
Average Annual Percentage Increase	----	11.8%	14.7%	12.1%	8.1%

During the period 1979-1983 the total price increase for all U. S. published titles was \$1,999.90 or 56.0%. The average annual percentage increase was 14.0%.

### PRICE COMPARISON OF ALL NON-U.S. PUBLISHED TITLES (13), BY YEAR

	1979	1980	1981	1982	1983
Total Subscription Price (all 13 non-U.S. titles)	\$ 862.37	\$ 974.77	\$1,265.39	\$1,283.55	\$1,443.14
Average Price Per Title	66.30	75.00	97.30	98.70	111.00
Average Annual Percentage Increase	----	13.1%	29.7%	1.4%	12.5%

During the period 1979-1983 the total price increase for all non-U.S. published titles was \$580.77, or 67.3%. The average annual percentage increase was 16.8%.

### PERCENTAGE OF THE TOTAL COST OF ALL 113 TITLES BY U.S. AND NON-U.S. TITLES, BY YEAR

	1979	1980	1981	1982	1983
U. S. Titles	80.5%	80.4%	78.4%	80.1%	79.4%
Non-U. S. Titles	19.5%	19.6%	21.6%	19.9%	20.6%

During the period 1979-1983 the total price increase was attributed 77.5% to U. S. titles, and 22.5% to non-U. S. titles.

courtesy of  
 EBSCO SUBSCRIPTION SERVICES

# New Consortium

## TUSCALOOSA HEALTH SCIENCES LIBRARY ASSOCIATION

Librarians in Tuscaloosa with significant collections in medicine, nursing and other health related areas have joined together to form an informal consortium, the Tuscaloosa Health Sciences Library Association (THESLA). Members are Don Bell, Shelton State Community College; Scully Cochran, Shelton State Community College; Barbara Doughty, Health Sciences Library, University of Alabama; Ruth Fenske, Graduate School of Library Service, University of Alabama; Kathy Fetters, Bryce Hospital; Deborah Grimes, Shelton State Community College; Olivia Maniece, VA Hospital; Betsy Pertzog, VA Hospital; and Lisa Rains, Health Sciences Library, University of Alabama.

The goal of the Association is to develop and promote library services offered by member libraries, to provide for better health sciences education, health research and patient care. The Association has written and adopted By-Laws using the By-Laws of the Jefferson County Health Sciences Librarians Association as a model.

Officers, who will serve two year terms, are Lisa Rains, President; Deborah Grimes, Vice President/Secretary; and Olivia Maniece, Treasurer.

The objectives of the Association are to provide free interlibrary loan among members, to share in the exchange of duplicate materials, and to develop a union list of member library's resources. During the coming year, the Association will begin developing a Union List of member's periodical holdings. The Union List will be formatted to be compatible with the Region 2 Union List compiled by the Southeastern/Atlantic Regional Medical Library of the National Library of Medicine Regional Medical Library network.

Lisa Rains, Chief Medical Librarian  
Health Sciences Library  
University of Alabama

---

Ann Smallwood  
December 11, 1930 - September 12, 1983

Colleague and Friend

# SPOTLIGHT

DR. WILLIAM BRUCE MITCHELL LIBRARY  
NORTHEAST ALABAMA REGIONAL MEDICAL CENTER  
Anniston, Alabama  
by Pricilla Lloyd, Librarian

The William Bruce Mitchell Library is located in the NEARMC situated for the physicians by the Doctor's Lounge and Medical Records for their easy access. The physicians are able to utilize the library 24 hours a day through our security system. Employees and patrons are able to use the library from 8:00 AM to 4:00 PM, Monday through Friday.

The Mitchell Library is more than just a collection of books and journals, it is an integral part of the hospital community. The Mitchell Library assumes an active role in supporting patient care, research, professional education, and planning of the medical and nursing staff, the allied health personnel and the hospital administration.

The Mitchell Library contains approximately 500 basic science and reference textbooks that are pertinent to the clinical education and research activities. We currently subscribe to 72 periodicals and have approximately 650 bound journals. We also complete interlibrary loans for area hospitals at a 10¢ per page fee. Other services include "Henry", who is our newly acquired Scanset computer, which enables us to perform MEDLINE searches for our physicians and other hospitals.

We would be thrilled to have anyone interested come in and visit our library. (Is my pride shining through?) Also, if anyone would like a listing of our periodical holdings, we would be happy to oblige.

## SURVEYS / FORMS

In the September issue I asked that you send me copies of surveys or forms you have used or are using to gather or distribute information for your library. I have received several from Joyce Sims (St. Vincent's, Birmingham) which follow (reduced in size). Joyce used different colored paper for each form. She also sent one to the department managers. Please keep sending them to me so we can include a few in each issue. You often get good ideas from you colleagues!



**INTRA HOSPITAL MEMORANDUM**  
**ST. VINCENT'S HOSPITAL**  
**BIRMINGHAM, ALABAMA**

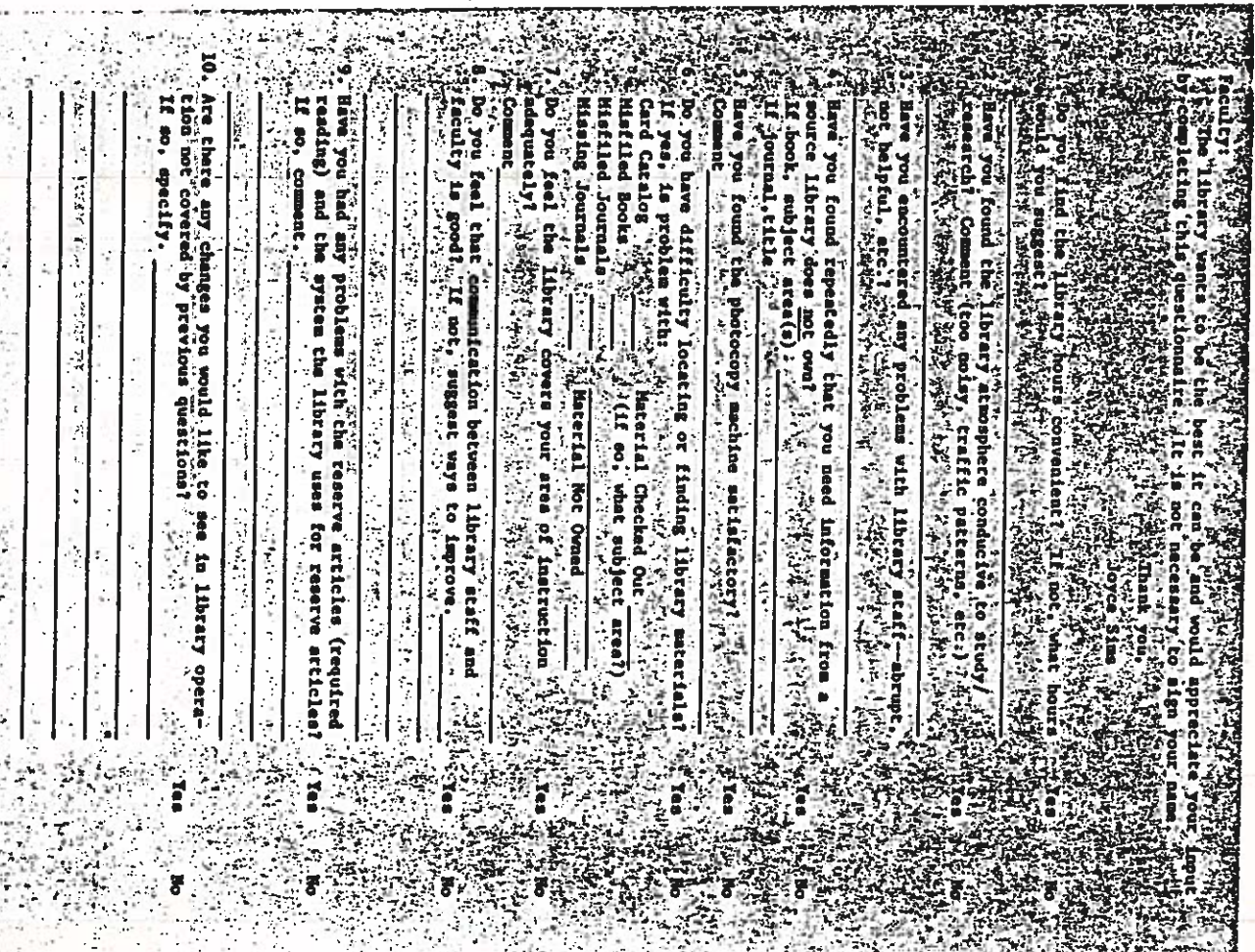
TO: Medical Staff DATE: 3/1/83

FROM: Joyce Sims, Librarian

SUBJ: SURVEY

In an effort to provide optimum library service, the library would appreciate your taking a few minutes to complete this questionnaire. Completed surveys may be returned to Library, book drop or Medical Affairs' office.

1. Do you find the library hours convenient? If not, what hours would you suggest? Yes  No
2. Have you found the library atmosphere conducive to study/research? Comment (too noisy, traffic patterns, etc.) Yes  No
3. Have you encountered any problems with library staff--abrupt, not helpful, etc? Yes  No
4. Have you found repeatedly that you need information from a source library does not own? If book, subject area(s) \_\_\_\_\_ If journal, title \_\_\_\_\_ Yes  No
5. Have you had occasion to use the library in person or by phone in the last year? If not, was the reason: \_\_\_\_\_ Yes  No   
 -hours inconvenient \_\_\_\_\_  
 -specialty area not included in library holdings \_\_\_\_\_  
 -adequate library at office/home \_\_\_\_\_  
 -needed service library does not provide \_\_\_\_\_  
 -no occasion to use library \_\_\_\_\_  
 (computer search, etc.) \_\_\_\_\_
6. Do you have difficulty locating or finding library materials? Yes  No   
 If yes, is problem with: \_\_\_\_\_  
 Card Catalog \_\_\_\_\_ Material Checked Out \_\_\_\_\_  
 Misfiled Books \_\_\_\_\_ (If so, what subject area?) \_\_\_\_\_  
 Misfiled Journals \_\_\_\_\_  
 Missing Journals \_\_\_\_\_ Material Not Owned \_\_\_\_\_
7. Have you needed access to library after hours? Yes  No
8. If so, have you found procedure of Security Office opening library satisfactory? Yes  No   
 Comment \_\_\_\_\_
9. Do you find library policies reasonable? Yes  No   
 Comment \_\_\_\_\_
10. Are there any changes you would like to see in library operation not covered by previous questions? Yes  No   
 Comment/Suggestion \_\_\_\_\_



Dear Student:

In an effort to provide the most appropriate library services and hours, please take a moment to fill out this questionnaire. Do not sign your name.

Thank you,  
Joyce Sims  
Librarian

PLEASE CIRCLE YES OR NO AND COMMENT

1. Do you find the library hours convenient? If not, what hours would you suggest?  
Yes No
2. Have you found the library atmosphere conducive to study/research? Comment (too noisy, traffic patterns, etc.)  
Yes No
3. Have you encountered any problems with library staff--abrupt, not helpful, etc.?  
Yes No
4. Have you found repleatedly that you need information from a source library does not own? If book, subject area(s) \_\_\_\_\_  
If journal, title \_\_\_\_\_  
Yes No
5. Have you found the photocopy machine satisfactory?  
Yes No  
Comment \_\_\_\_\_
6. Do you have difficulty locating or finding library materials? If yes, is problem with:  
Card Catalog \_\_\_\_\_  
Misfiled Books \_\_\_\_\_  
Misfiled Journals \_\_\_\_\_  
Missing Journals \_\_\_\_\_  
Material Checked Out \_\_\_\_\_  
(If so, what subject area) \_\_\_\_\_  
Material Not Owned \_\_\_\_\_  
Yes No
7. Have you encountered any problems with the book return?  
Yes No  
Comment \_\_\_\_\_

Continued On Back

8. Have you found the system of checking out books satisfactory?  
Yes No  
Comment \_\_\_\_\_
9. Do you find the library policies reasonable?  
Yes No  
Comment \_\_\_\_\_
10. Did you find your initial library orientation adequate and helpful? If not, comment.  
Yes No
11. Is the circulation/check-out period of three days adequate? Comment/Suggest  
Yes No
12. Have you had any problems with the reserve articles (required reading) and the system the library uses for reserve articles? If so, comment \_\_\_\_\_  
Yes No
13. Are there changes you would like to see in library operation not covered by previous questions? If so, specify. \_\_\_\_\_  
Yes No

## EVALUATION/SUGGESTIONS

### 1. Evaluation SC/AlHeLA Meeting, Oct 19-22, 1983

Please rate each of the following program segments according to its value to you, with 5 being the MOST VALUABLE and 1 being the LEAST VALUABLE. (NA = Did not attend)

- \_\_\_ CE 563 Monograph Selection
- \_\_\_ NLM Online Update
- \_\_\_ Keynote - Marilyn Benveniste - Professional Image
- \_\_\_ Panel - Physical Facilities
- \_\_\_ Mary Clay Reinhardt - Image, Inc.
- \_\_\_ SC/MLA Business Meeting
- \_\_\_ EBSCO Tour
- \_\_\_ AlHeLA Breakfast/Business
- \_\_\_ Kent Mayfield - MLA Inventing the Future
- \_\_\_ Carol Jenkins - Region II RML
- \_\_\_ Panel - Donnell's & Hodges
- \_\_\_ Tours of Hospital Libraries
- \_\_\_ CE 653 Writing for Publication
- \_\_\_ CE 451 Online Search Optimization
- \_\_\_ RML Workshop - Intro. Online Searching for non-searchers

Other Comments:

2. My suggestion for the method of presentation would be:

3. I would be interested in the following topics for future meetings:

4. I would like to suggest the following people as speakers, etc:



5. I would be interested in having a spring meeting, workshop, or continuing education course:

6. Other worthwhile projects and/or activities:

7. My biggest problems in my library are:

-----

\_\_\_\_\_

Name

I would be interested in serving on the following committees:

<input type="checkbox"/> Publications	<input type="checkbox"/> Program
<input type="checkbox"/> Union list	<input type="checkbox"/> Legislative
<input type="checkbox"/> Membership	<input type="checkbox"/> Nominating
<input type="checkbox"/> By-laws	

I am willing to serve as an officer next year. Don't be bashful!

<input type="checkbox"/> Vice president
<input type="checkbox"/> Secretary/Treasurer
<input type="checkbox"/> Member-at-large

Return to:

Nancy W. Clemmons  
3820 Arundel Dr.  
Birmingham, AL 35243

by JANURARY 15, 1984

ALABAMA HEALTH LIBRARIES ASSOCIATION

APPLICATION FOR MEMBERSHIP

1984

Name: \_\_\_\_\_ Date: \_\_\_\_\_

Home Address: \_\_\_\_\_

\_\_\_\_\_

Business Address: \_\_\_\_\_

\_\_\_\_\_

Job Title: \_\_\_\_\_

Preferred Mailing Address (Check One)      ( ) Home      ( ) Business

Phone Number:      Home \_\_\_\_\_      Business \_\_\_\_\_

Dues: \$10 Per Year

Send Check or Money Order (Make payable to ALHELA) To:

B. J. Gramka, Secretary/Treasurer  
Alabama Health Libraries Association  
Lister Hill Library of the Health Sciences  
University of Alabama in Birmingham  
Birmingham, Alabama 35294

Please rate your top three preferences for program topics for future meetings:

- |   |                                    |
|---|------------------------------------|
| ( ) Role of Health Library                              | ( ) Copyright Laws                 |
| ( ) Health Information Resources                        | ( ) JCAH Standards for Libraries   |
| ( ) Promoting the Library to the Hospital Administrator | ( ) Interlibrary Loan              |
| ( ) Basic Library Tour Training Workshop                | ( ) NLM Grant Program              |
| ( ) Networking and Union Lists                          | ( ) Statewide Cooperative Programs |

( ) Other: \_\_\_\_\_

\_\_\_\_\_

\_\_\_\_\_

\_\_\_\_\_

\_\_\_\_\_

Judy F. Johnston  
Biomedical Library